

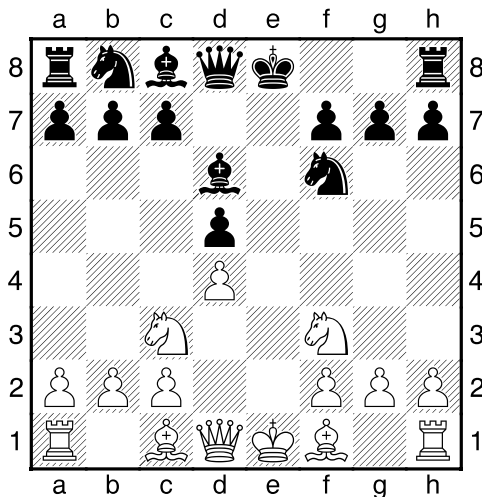
**(8) Harry,van der Pol - Theo,Verstappen [C01]**

Intern GESS 11/12, 11.12.2017

[Deep Fritz 14 x64 (15m)]

[C01: Frans: Ruil Variant]

1.e4 e6 2.d4 d5 3.exd5 exd5 4.Pf3 Ld6 5.Pc3 Pf6 [Diagram

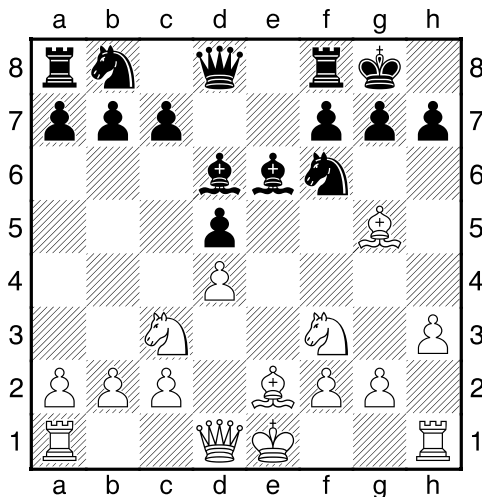


laatste zet uit boek]

6.h3 [Zekert g4]

6...0-0 [Zwart rokeert en verbeterd de veiligheid van de koning]

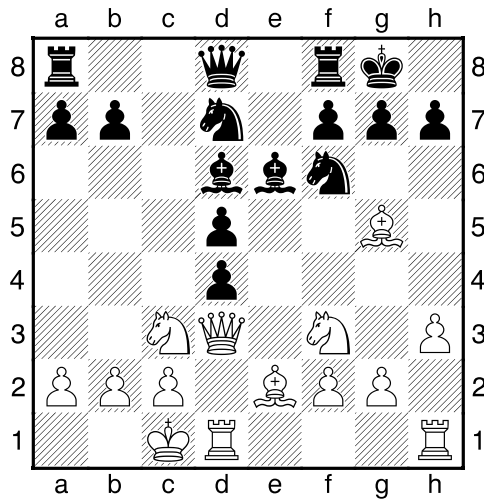
7.Lg5 Le6 8.Le2 [Diagram



]

8...Pbd7 9.Dd3 c5 10.0-0-0 [10.dxc5 Lxc5 11.0-0 Dc7=]

10...cxd4 [Diagram



]

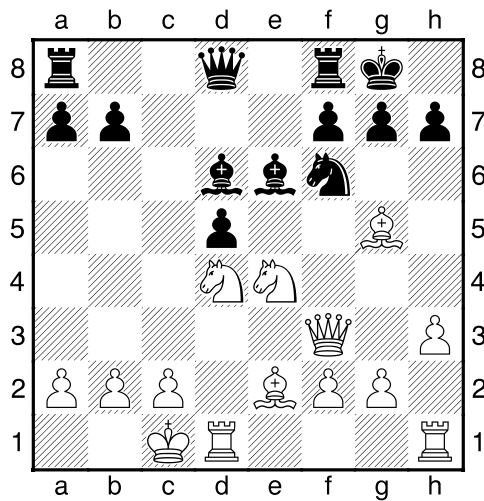
[10...c4 11.De3<sup>3</sup>]

**11.Pxd4**= [Het paard is niet makkelijk aan te vallen op d4.]

**11...Pc5** [11...h6!? 12.Lh4 Db6=]

**12.Df3<sup>2</sup> Pce4** [12...Pcd7 13.Lb5<sup>2</sup>]

**13.Pxe4** [Diagram

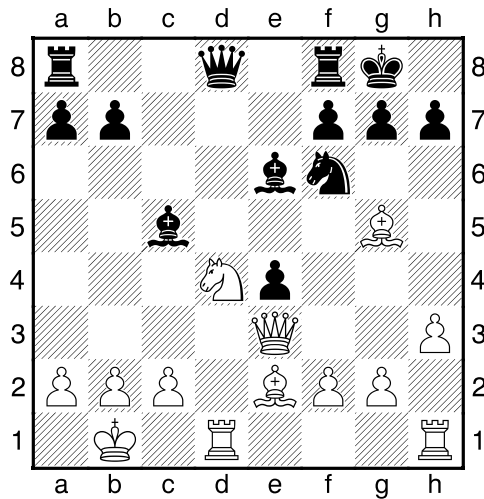


]

[13.Pxe6 fxe6 14.Pxe4 dxe4±]

**13...dxe4<sup>2</sup> 14.De3** [14.Pxe6!? exf3 15.Pxd8 fxg2 16.Thg1 Tfxd8 17.Lf3±]

**14...Lc5= 15.Kb1** [Diagram



]

**15...Da5** [Zwart dreigt met materiaalwinst: Da5xa2]

[<sup>1</sup>15...Tc8=]

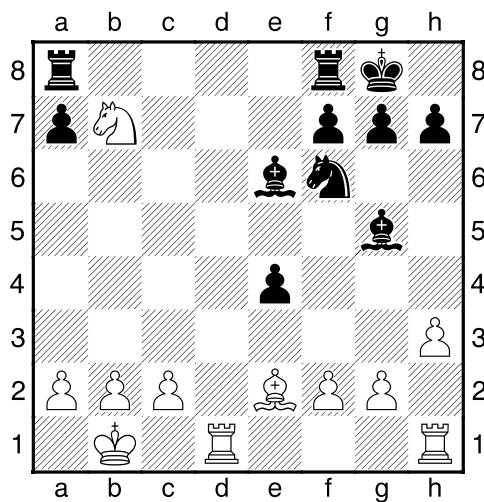
**16.Pb3??** [Geeft het voordeel weg.]

[<sup>1</sup>16.a3 Pd5 17.Dxe4 Pc3+ 18.bxc3 Lxd4 19.cxd4 Dxc5 20.h4<sup>2</sup>]

**16...Lxe3!!**→ [Verwijder verdediger: e3]

**17.Pxa5** [17.fxe3 Dxc5 Verwijder verdediger Ontdekte aanval; 17.Lxe3 Lxb3 18.axb3 (18.cxb3 Tfe8 Combinatie) 18...Tfc8 Combinatie]

**17...Lxg5 18.Pxb7** [Diagram

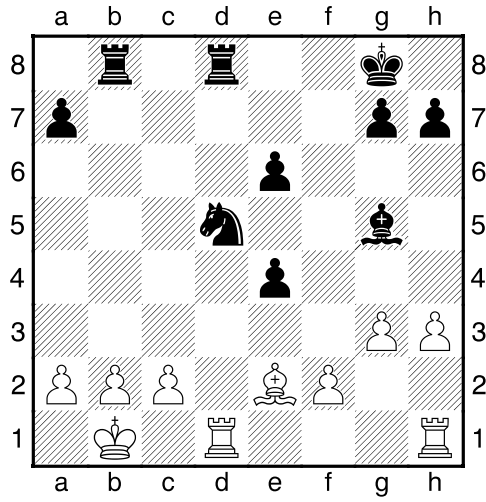


]

**18...Tab8 19.Pc5 Tfd8** [19...Lc8 Is nauwkeuriger. 20.g4→+]

**20.Pxe6 fxe6 21.g3** [21.c4→+]

**21...Pd5** [Diagram



]

[21...Pd5 22.Ka1 Lf6-+]

**0-1**